

1689-1

Area inside the dashed red lines is part of the 77.5 acres from Walcutt to Litchford

Area inside the yellow lines is the 32.5 acres set off to Catherine Depp as her portion of Litchford's Estate

West 1/2

East 1/2

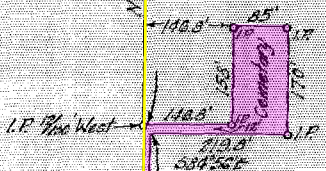
Tyler to Snapp 1947 Except 1/2 Acre

Tyler (dec'd 1948) to Moats by deed of transfer in 1950

60 acres Legg to Litchford DB 14 pg 85 1835

14.491 Ac.

14.451 Ac.



Farmers and Merchants Bank to George H.R. Tyler 1911 "32 acres more or less except and reserving from said sale" about 1/2 acre of land

This area is part of the tract set off to Pleasant B. Litchford (son) by the Will of Pleasant Litchford

0.269 Acres to Paul Benson 1946

Information added by Gail A. Wilson, P.S. Professional Surveyor Office of Franklin County Engineer Cornell R. Robertson, P.E., P.S. 970 Dublin Road Columbus OH 43215 October 14, 2020

32.5 AC TRACT IN UPPER ARLINGTON, OHIO FOR

WALLACE F. ACKLEY

SCALE - 1" = 200 NOVEMBER 3, 1954

THE JENNINGS-LAWRENCE Co
CIVIL & MUNICIPAL ENGINEERS
COLUMBUS, OHIO

BY *W.D. Davidson*
Registered Surveyor

Revised - 1-19-55
NOTE - Plot from survey made 5-4-48

Drawn/Checked
J.E.W./B.L.S.

J-6391